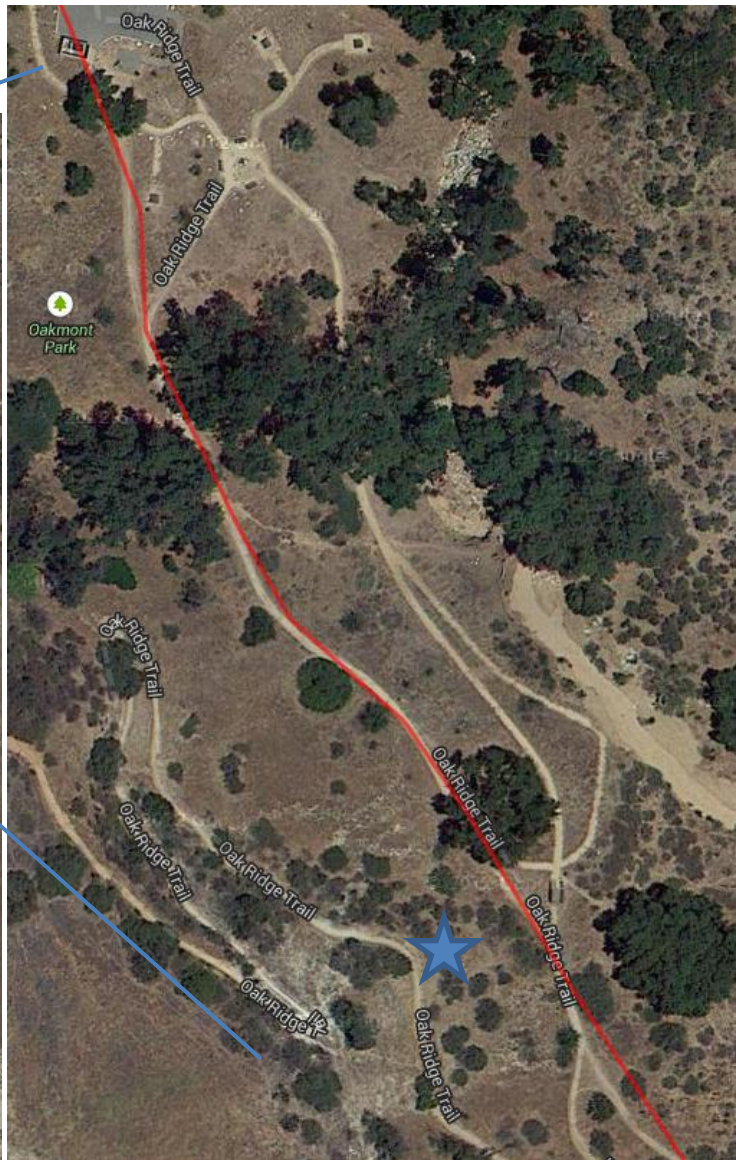


Enter Oakmont Park

Mile 6.4 (10. KM)

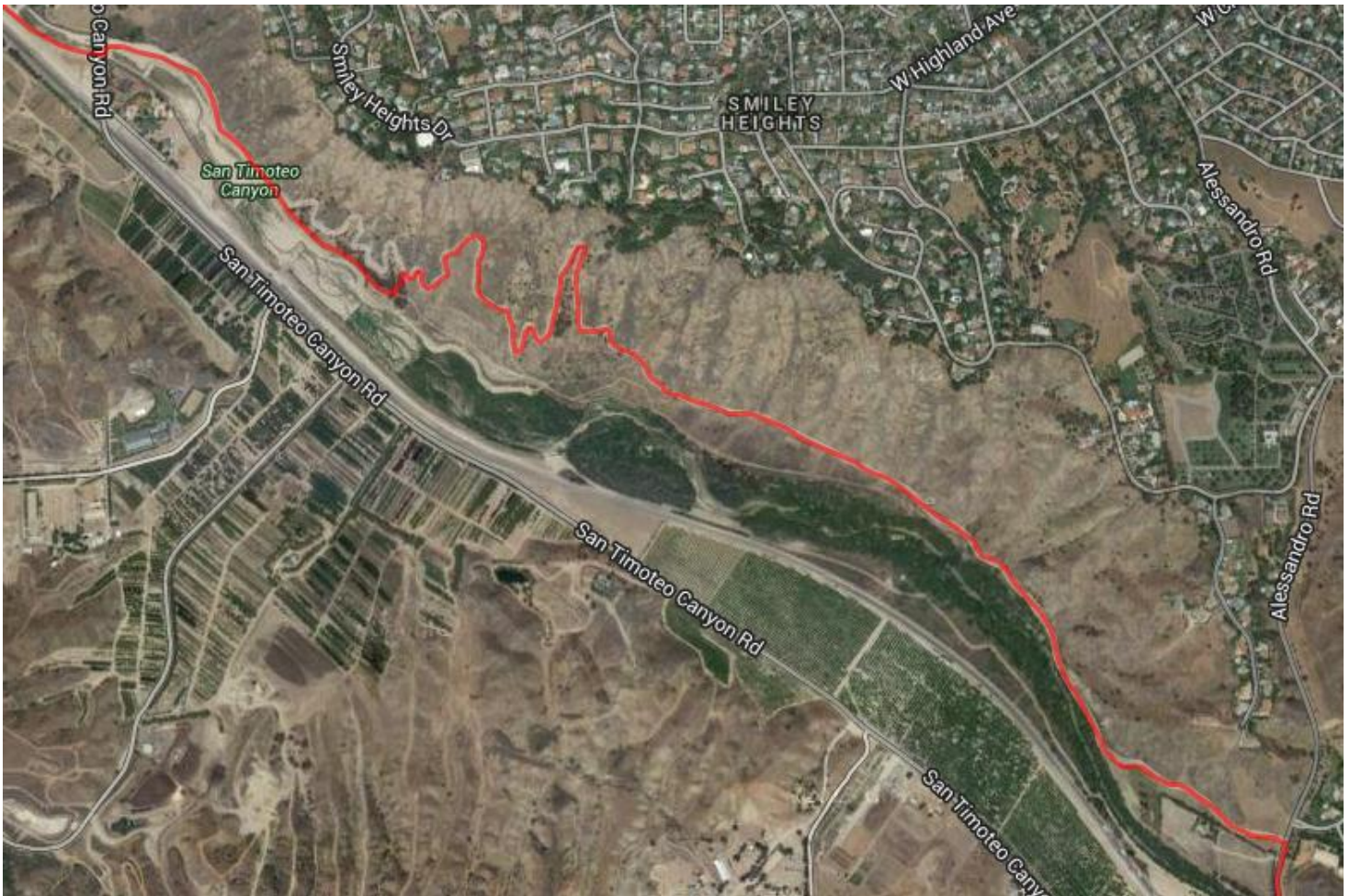


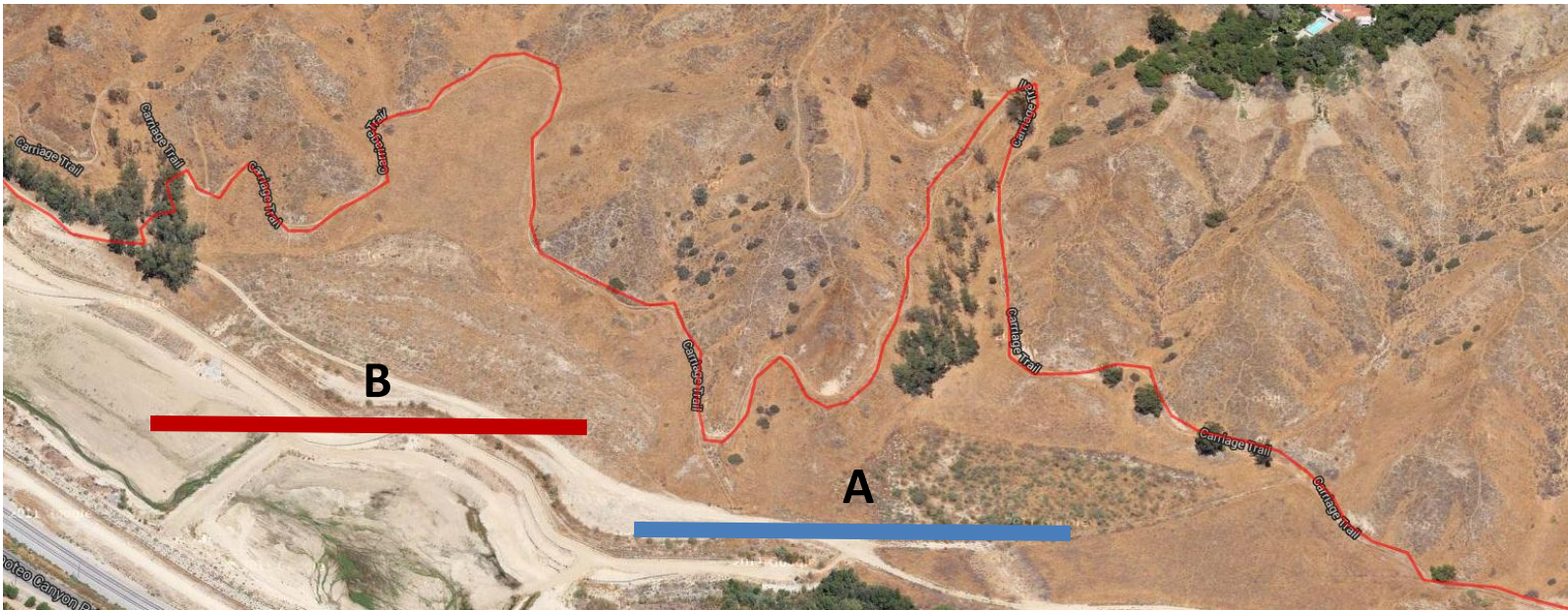


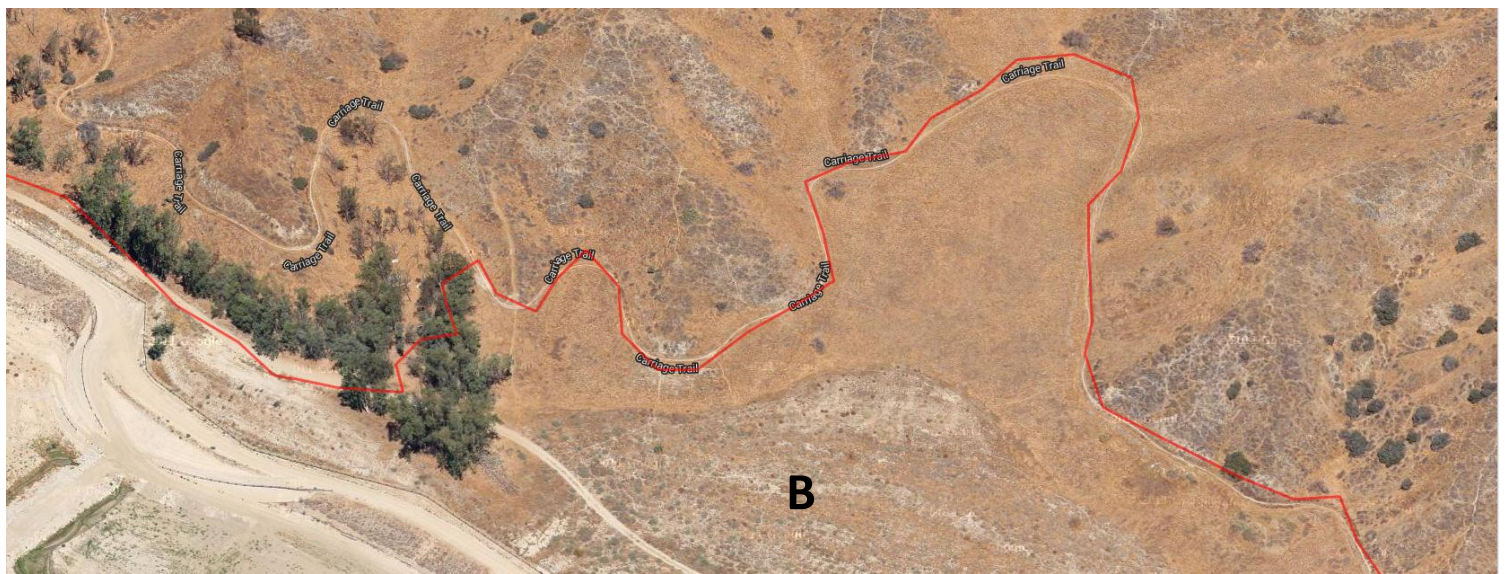




Carriage Trail
11.2 miles (18.0 km)



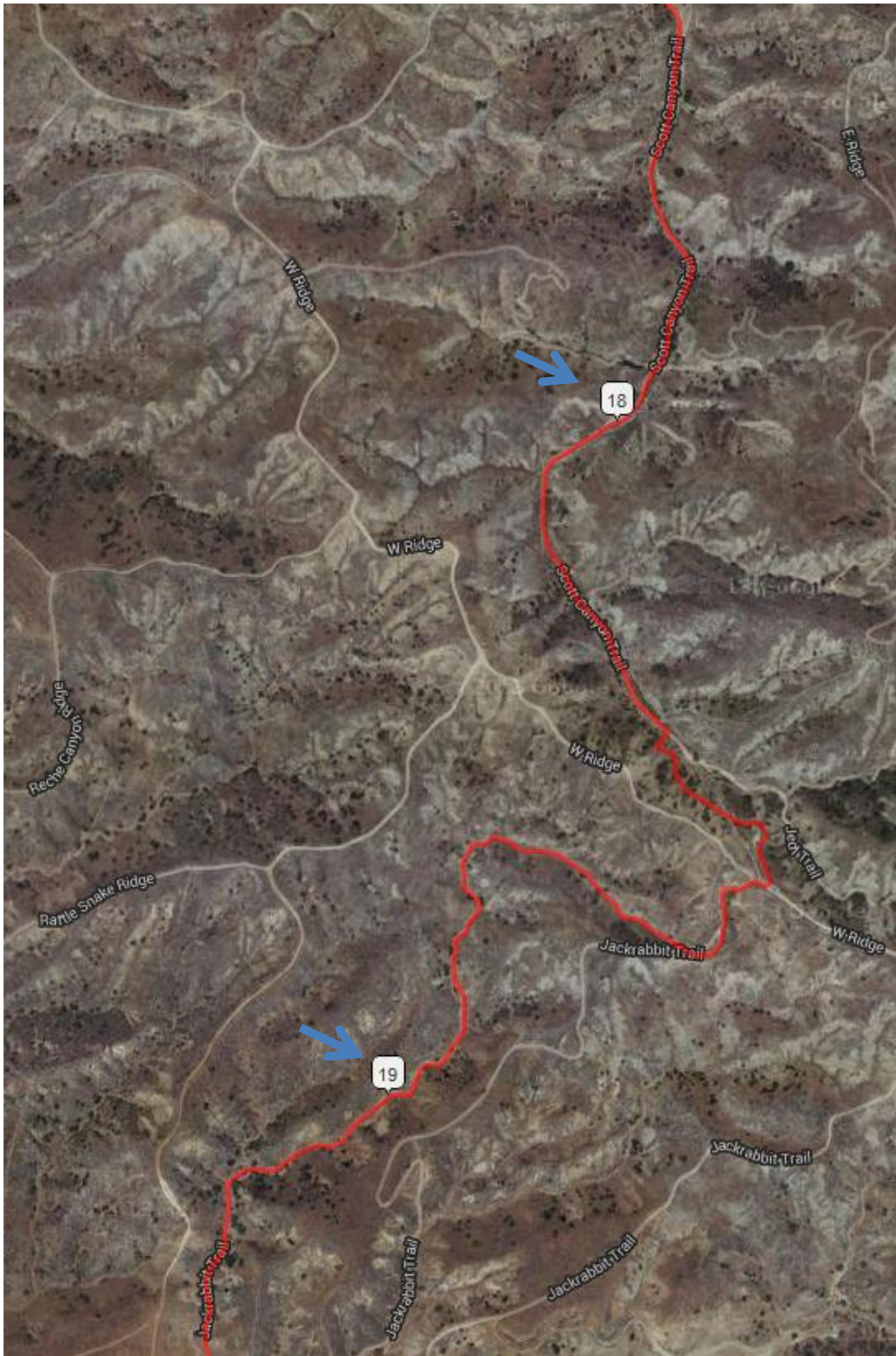






Scott Canyon Trail
17.3 miles (27.8 km)



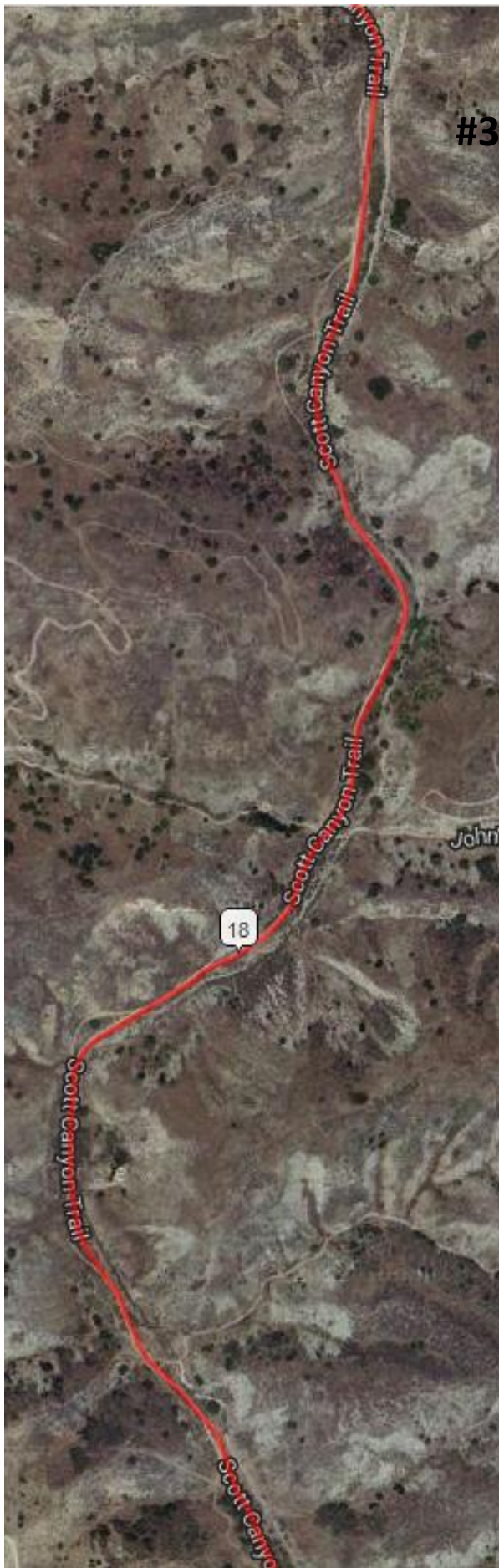




Close-up/zoomed in











Woodhouse Rd. (Through Gate)

36.5 miles (58.7 km)

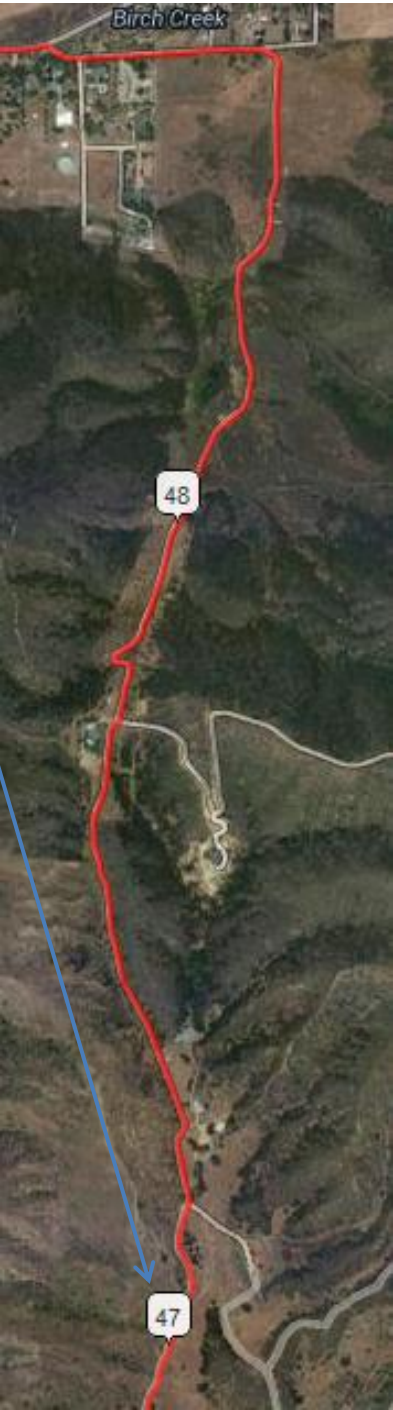


Whisper Ranch Trails
44.4 miles (71.5 km)



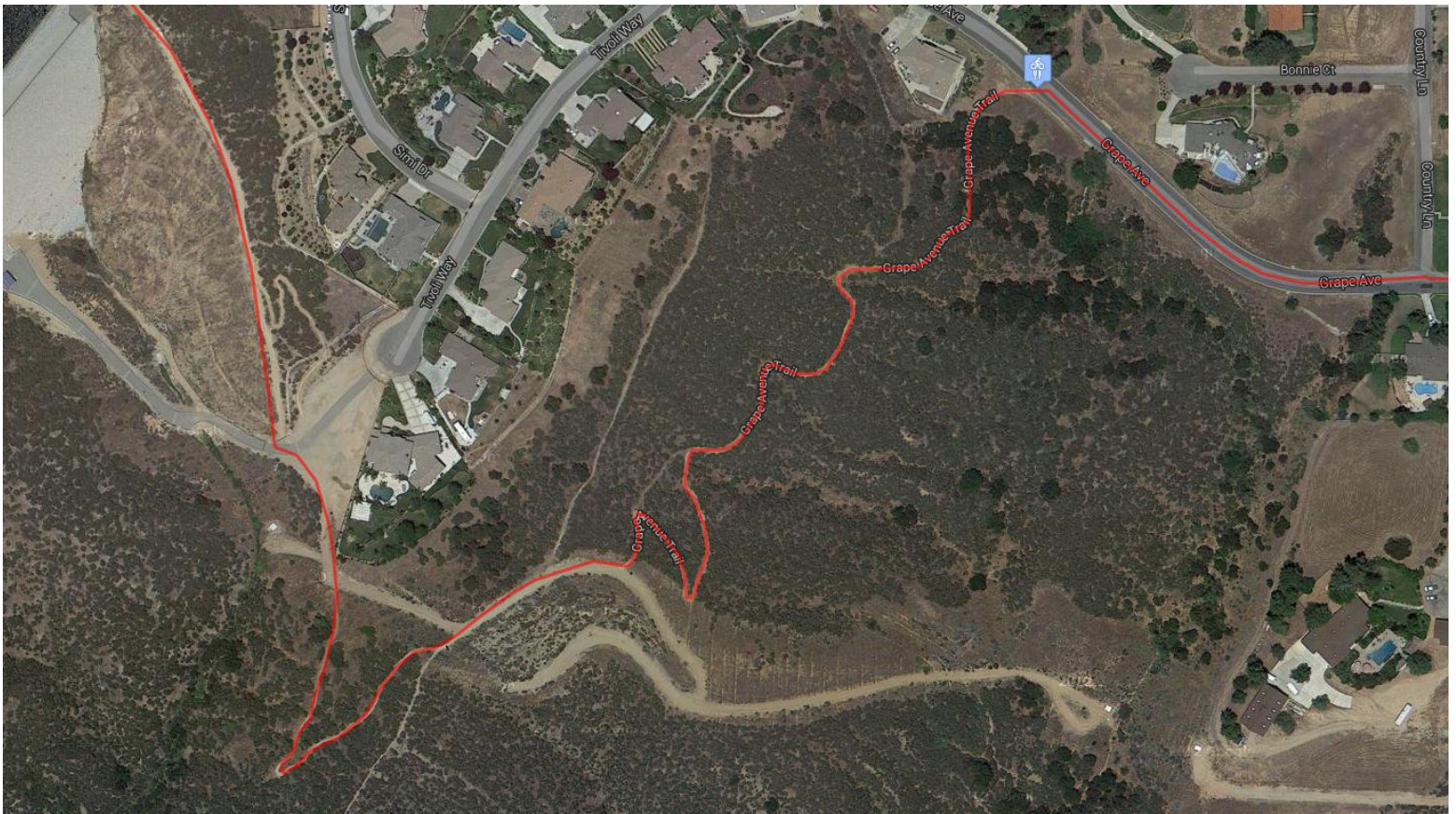
Canyon Dr

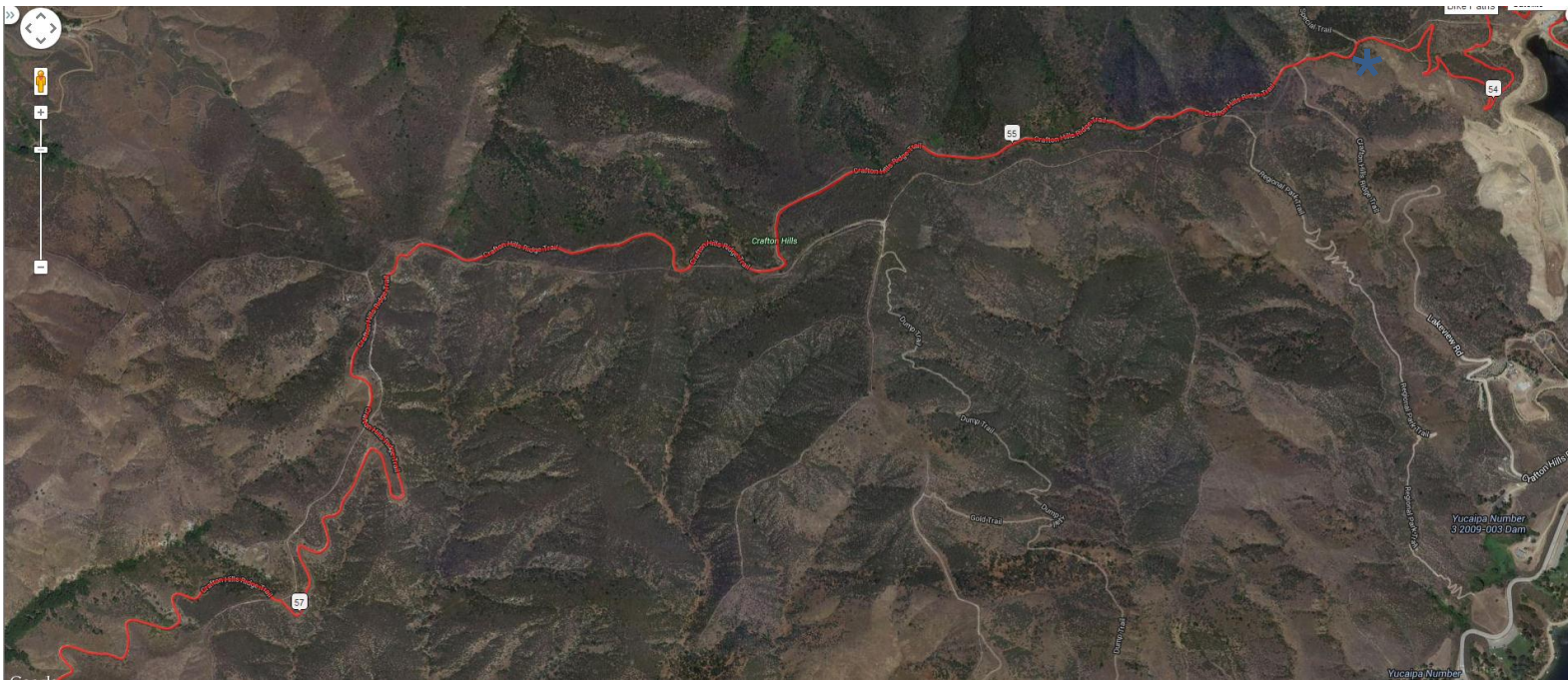
46 miles (74.0 km)

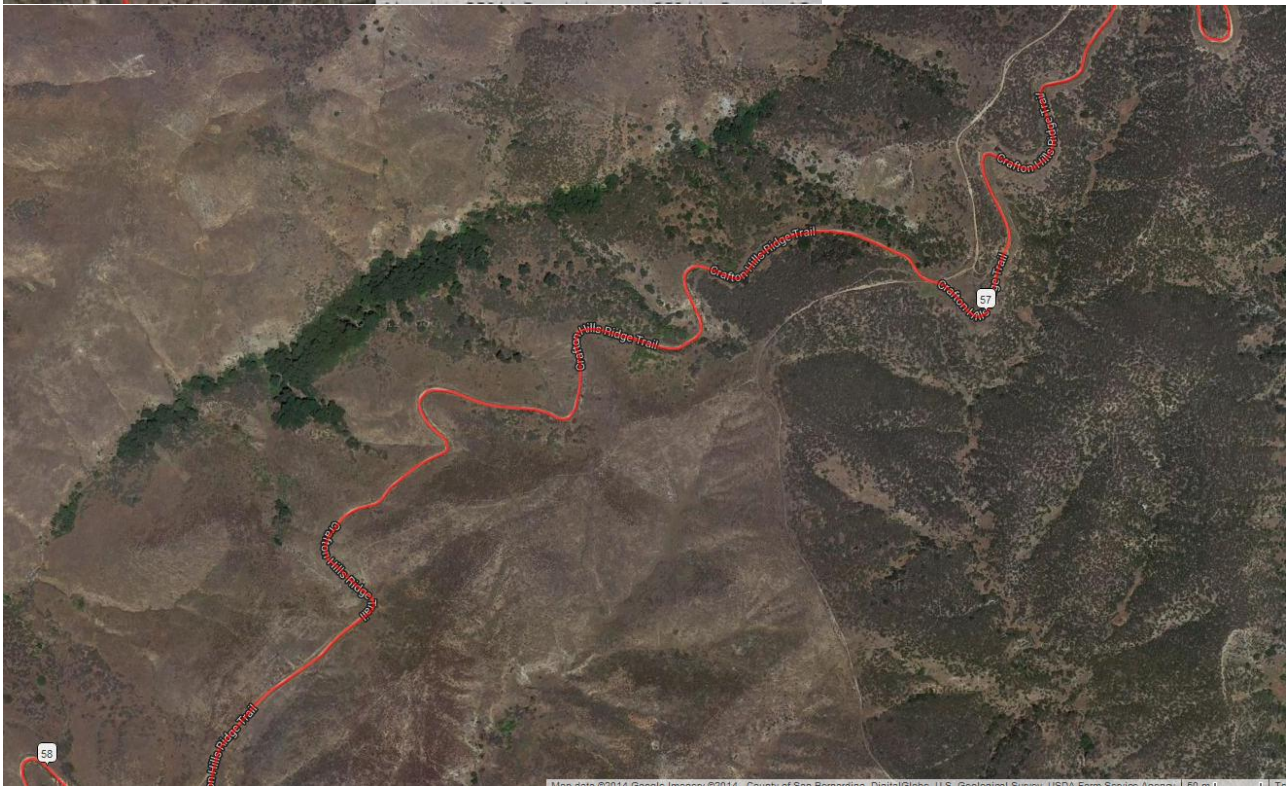


Grape Trail / Crafton Hills Ridge Trail

52.7 miles (84.8 km)



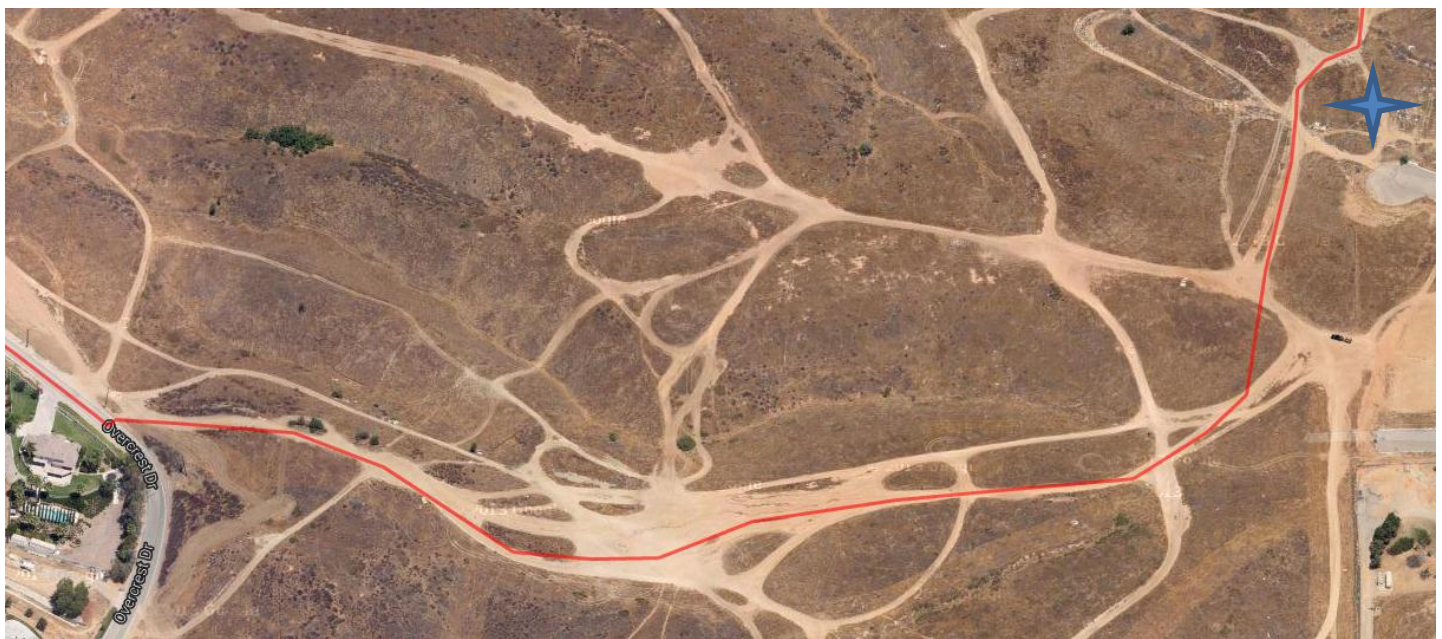
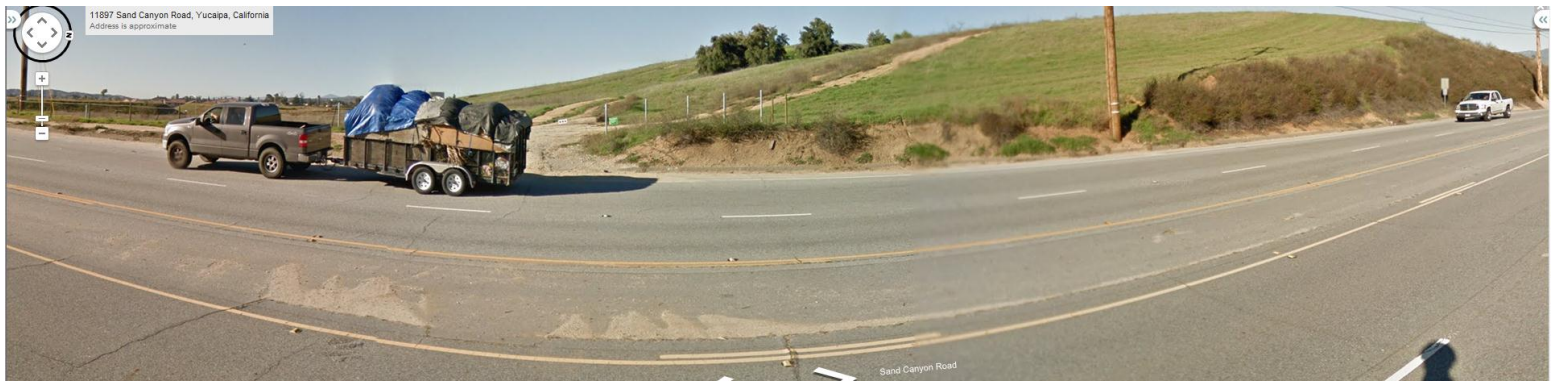






Sand Canyon Trail

59.7 miles (96.1 km)



Lt at Crosswalk through grass

63.6 miles (102.4 km)



Sylvan Blvd (dirt)

64.3 miles (103.5 km)



Onto OB Trail (after tracks)

65.5 miles (105.4 km)

